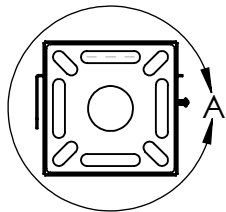
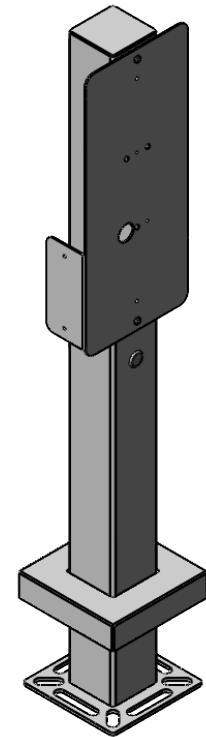
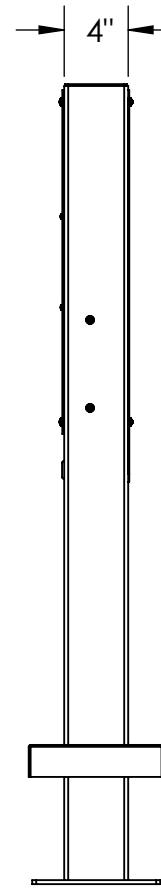
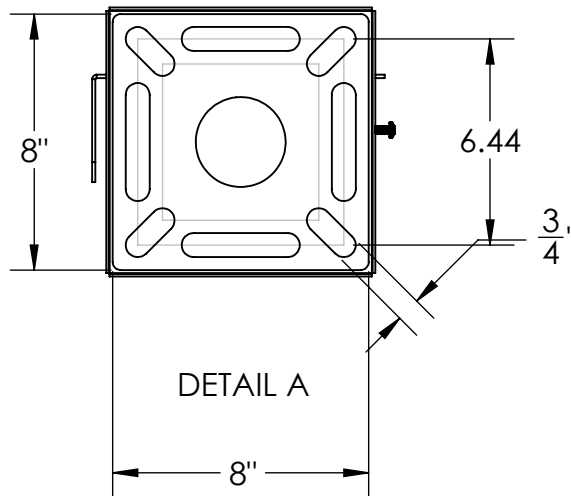


MOUNTS A CLIPPER CREEK HCS-40 OR A TESLA WALL CHARGER

\*ORDER PART# PLTFAC-921-TES FOR A 2 UNIT CHARGE STATION. (DISCARD ACCESS PANEL AND MOUNT TO BACKSIDE.)



NOTES:  
1. MATERIAL OF CONSTRUCTION IS MILD STEEL COATED IN 2-4 MILS BLACK WRINKLE POWDER COATING.

www.GooseneckStands.com  
(800) 878-7829  
Sales@GooseneckStands.com

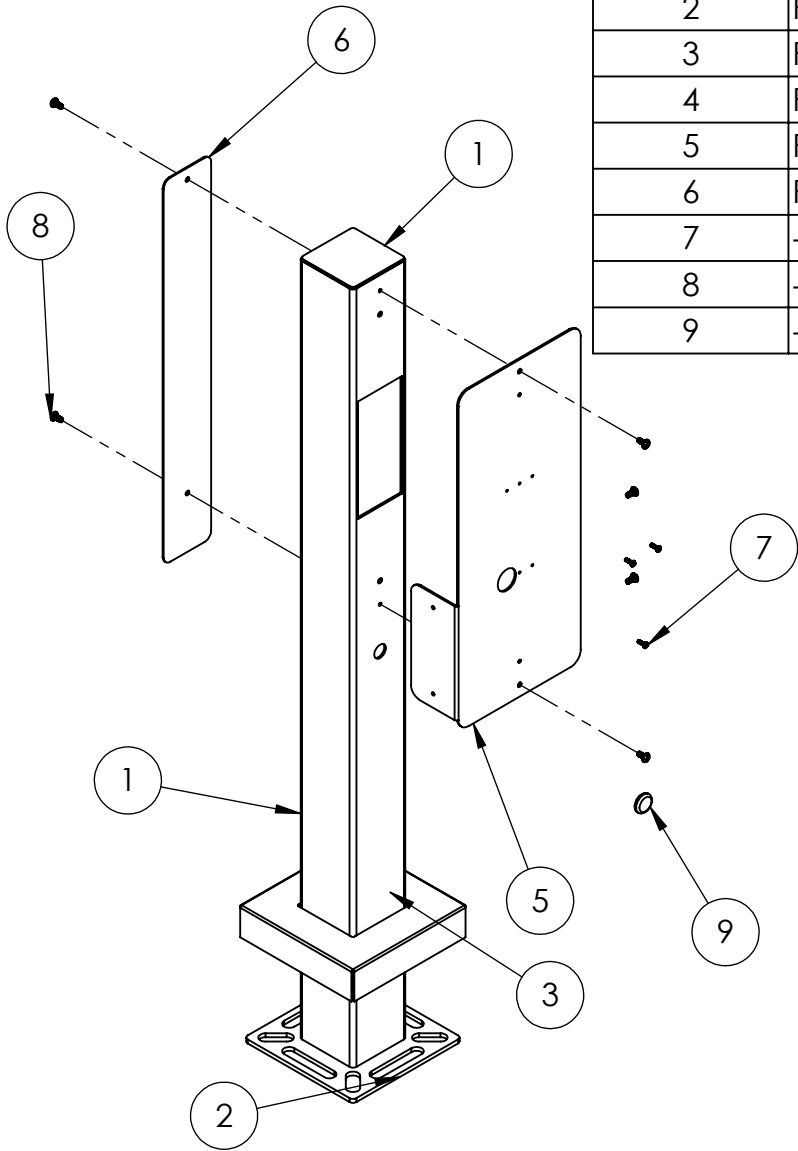
UNLESS OTHERWISE SPECIFIED:  
DIMENSIONS ARE IN INCHES  
TOLERANCES:  
FRACTIONAL  $\pm 1/32$   
ANGULAR:  $\pm 2^\circ$   
TWO PLACE DECIMAL  $\pm 0.010$   
THREE PLACE DECIMAL  $\pm 0.005$   
INTERPRET GEOMETRIC  
TOLERANCING PER:  
ASME Y14.5 -2009

NAME	DATE
DRAWN	
CHECKED	

TITLE:  
**INSTALLATION**

SIZE	PART NO.	REV
<b>A</b>	44TOW-EVCS-01-CRS	<b>A</b>
WEIGHT:	NO SCALE	SHEET 1 OF 5

ITEM NO.	PART NUMBER	DESCRIPTION	QTY.
1	HD-BLACK TOWER	STEEL TOWER BODY	1
2	PLTBAS-8-3	STANDARD 8 IN BASE PLATE	1
3	PLTCOV-8-4	STANDARD 8 IN COVER PLATE	1
4	PLTCAP-4	STANDARD 4 IN CAP PLATE	1
5	PLTFAC-921-TES	TESLA/CLIPPER CREEK FACE PLATE	1
6	PLTACC-321	EV ACCESS PANEL	1
7	--	8-32 X 1/2" PAN HEAD SCREW	3
8	--	1/4-20 X 1/2 SS PAN HEAD	6
9	--	PUSH-IN PANEL PLUG FOR 7/8" ID	1



NOTES:

1. BUTT WELDED SECTIONS ARE NOT ALLOWED, EACH SECTION OF TUBE MUST BE FROM CONTINUOUS STOCK.
2. ALL WELDS ARE TO BE CONTINUOUS FILLET WELDS UNLESS NOTED OTHERWISE.
3. SEE STANDARD PREPARATION AND COATING INSTRUCTIONS FOR COATING PROCEDURE AND COLOR.
4. FASTENERS ARE TO BE BAGGED AND SHIPPED WITH PEDESTAL.
5. SEE STANDARD PACKAGING INSTUCTIONS FOR PACKAGING PROCEDURE.

www.GooseneckStands.com  
(800) 878-7829  
Sales@GooseneckStands.com

UNLESS OTHERWISE SPECIFIED:

DIMENSIONS ARE IN INCHES  
TOLERANCES:  
FRACTIONAL  $\pm 1/32$   
ANGULAR:  $\pm 2^\circ$   
TWO PLACE DECIMAL  $\pm 0.010$   
THREE PLACE DECIMAL  $\pm 0.005$

INTERPRET GEOMETRIC  
TOLERANCING PER:  
ASME Y14.5 -2009

	NAME	DATE
DRAWN		
CHECKED		

TITLE:  
**ASSEMBLY**

SIZE	PART NO.	REV
<b>A</b>	44TOW-EVCS-01-CRS	<b>A</b>
WEIGHT:	NO SCALE	SHEET 2 OF 5