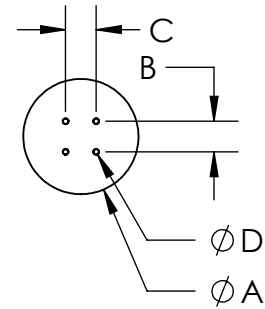
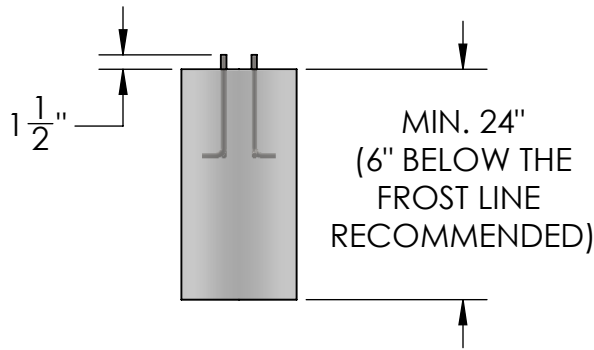
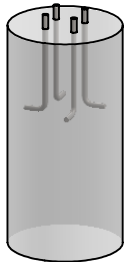


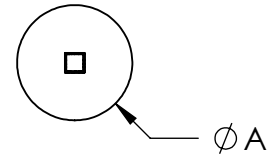
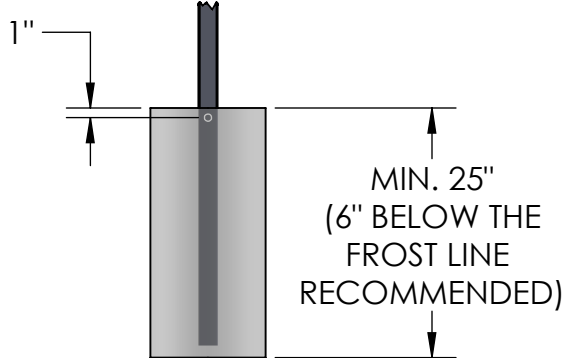
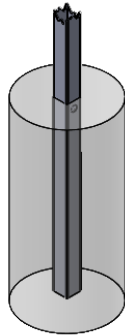
ANCHOR PROCEDURE

POURED CONCRETE METHODS:

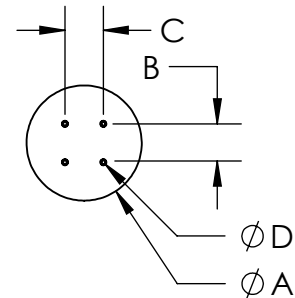
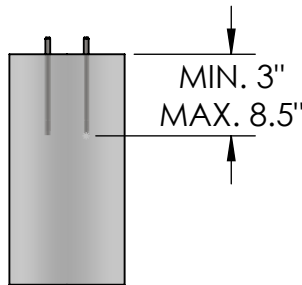
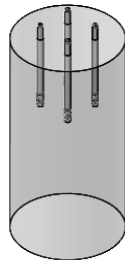
L-BOLT



IN-GROUND



EXISTING CONCRETE METHOD: WEDGE ANCHOR



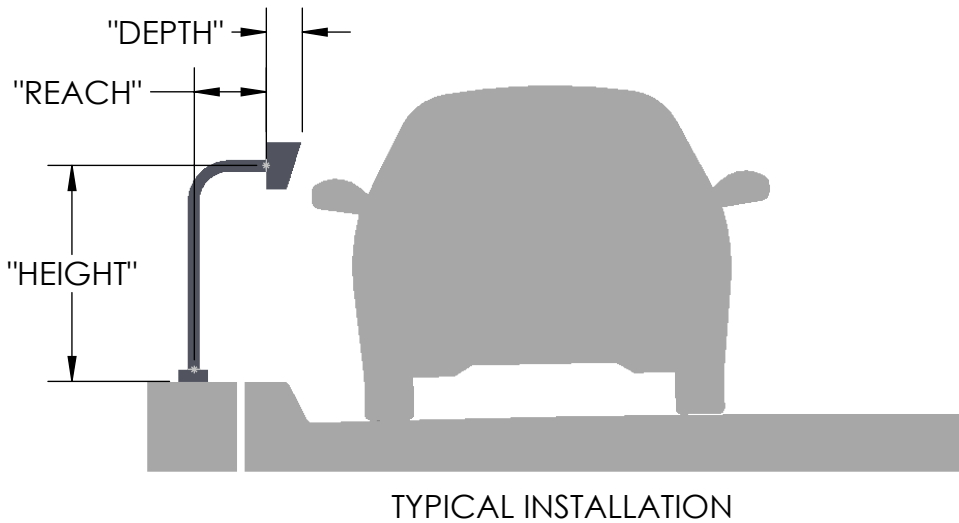
| BASE PLATE SIZE | TUBE SIZE | "A" | "B" | "C" | "D" |
|-----------------|-----------|-----|-------|-------|-----|
| 4X4 | -- | 8 | 2 | 2 | 1/2 |
| 4X6 | -- | 8 | 2 | 4 | 1/2 |
| 5X5 | -- | 10 | 3 | 3 | 1/2 |
| 8X8 | -- | 12 | 6 1/2 | 6 1/2 | 5/8 |
| 12X12 | -- | 16 | 10 | 10 | 5/8 |
| -- | 2X2 | 6 | -- | -- | -- |
| -- | 3X3 | 8 | -- | -- | -- |
| -- | 4X4 | 10 | -- | -- | -- |

NOTES:

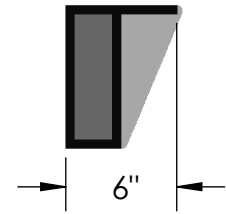
- DESIGNED TO USE SONOTUBE COMMERCIAL CONCRETE FORMS. CONCRETE POURED DIRECTLY INTO A BARE EXCAVATED HOLE IS ALSO ACCEPTABLE.
- DIMENSIONS OF "B" AND "C" ARE FOR REFERENCE, PLEASE CHECK PRODUCT DATA SHEET FOR CURRENT MOUNTING HOLES BEFORE INSTALLATION.

| | | | | |
|---|----------|--------------|---------------------|--|
| UNLESS OTHERWISE SPECIFIED: DIMENSIONS ARE IN INCHES TOLERANCES: FRACTIONAL $\pm 1/32$ ANGULAR: $\pm 2^\circ$ TWO PLACE DECIMAL ± 0.010 THREE PLACE DECIMAL ± 0.005 INTERPRET GEOMETRIC TOLERANCING PER: ASME Y14.5 -2009 | NAME | DATE | TITLE: | |
| | DRAWN | | ANCHOR PROC. | |
| | CHECKED | | | |
| | PART NO. | | REV | |
| 42-TT | | 0 | | |
| NO SCALE | | SHEET 1 OF 1 | | |

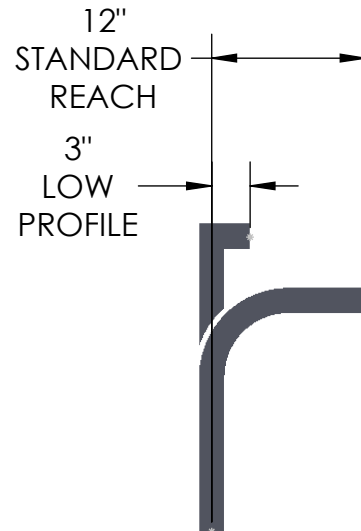
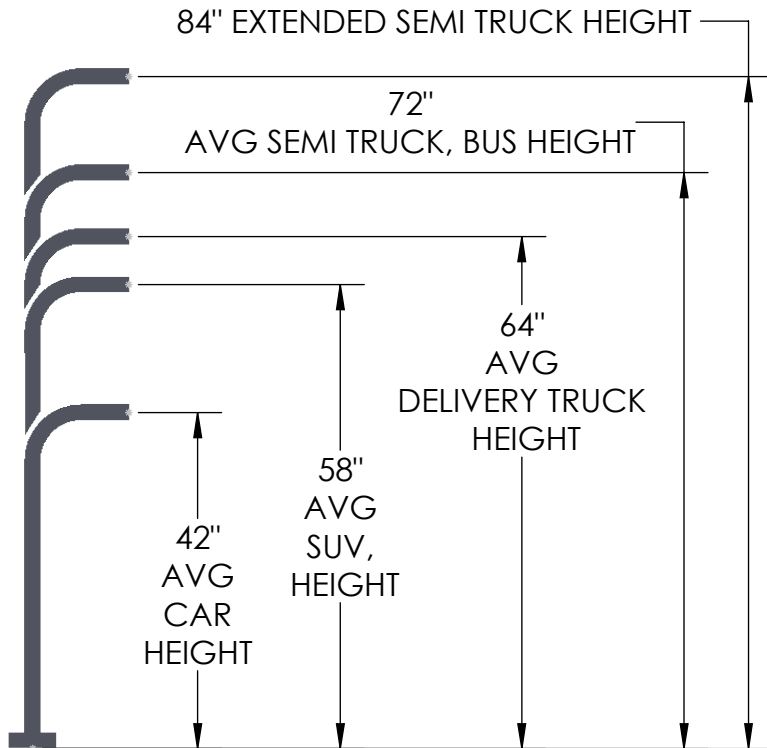
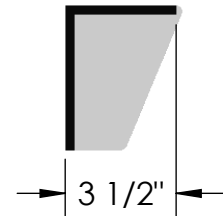
MOUNTING CRITERIA



STANDARD HOUSING DEPTH



STANDARD HOOD DEPTH



| | | | | | |
|--|--|------|----------|-------------------|-----|
| <p>UNLESS OTHERWISE SPECIFIED:</p> <p>DIMENSIONS ARE IN INCHES</p> <p>TOLERANCES:</p> <p>FRACTIONAL: $\pm 1/32$</p> <p>ANGULAR: $\pm 2^\circ$</p> <p>TWO PLACE DECIMAL: ± 0.010</p> <p>THREE PLACE DECIMAL: ± 0.005</p> <p>INTERPRET GEOMETRIC TOLERANCING PER: ASME Y14.5 -2009</p> | | NAME | DATE | TITLE: | |
| | | | | MOUNTING CRITERIA | |
| | | | | PART NO. | REV |
| | | | | 42-TT | 0 |
| | | | NO SCALE | SHEET 1 OF 1 | |