

# SPEC ANY TECH. CONFIGURE YOUR FIT.

## PRO Stations™

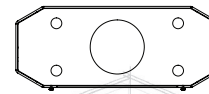
Revolutionary call stations that integrate any tech into a durable, beautiful, fully-lit architectural design that set them apart from all other solutions. Made from laser-cut aluminum, incorporating any call button of your choice, is fast and simple.

### PRODUCT FEATURES

- Specify any intercom of your choice
- Programmable lighting
- Strong aluminum construction
- Variable height 4'-14'
- Easily customizable
- Branding program
- Ready in 12-15 business days or less
- Shippable by UPS, FedEx, or LTL
- Single-person installation process
- FREE custom CAD designs in 24 hours

### Areas of Use

- College & Education
- Government & Municipalities
- Corporate Campus
- Transportation
- Healthcare
- Parks & Trails



OCTAGONAL SHAPE



INTEGRATED STROBES



INTEGRATED CAMERAS

EMERGENCY



ANY EMERGENCY CALL DEVICE

PUSH FOR HELP

LED LIGHTING



WALL STATION

EMERGENCY

GROUND TOWER

## Key Features

### BASE MODEL

#### Removable Top Cap

Access to mounting plate for additional tech

#### LED Strobes

Blue, programmable with presets, 4 sides

#### LED Lighting

Vertical light strips, programmable with presets (RGBW), 4-sides

#### Vinyl Lettering

"Emergency", reflective, high visibility

#### Powder Coating

Primed and powder coated dynasty blue, UV inhibitor, 10+ year weatherability

#### Back Panel

Removable for easy access

#### Octagonal Shape

Vertical strength and easy to customize for any device (patent pending)

#### Power Requirement

120 VAC for lighting, consult manufacture for device requirements

#### Low Profile

48" - 104" H x 15" W x 6" D

#### Cost-Effective Shipping

Individually boxed, ship via UPS, FedEx

#### Aluminum Construction

104" tower weighs 62 lbs

#### Internal Mounting Plate

Welded, no fasteners showing

#### Integrate Any Intercom

Fits Axis/2N, Zenitel, Aiphone, Comelit, Viking, etc.

### UPGRADE OPTIONS

#### Spec Any Tech

Easily add tech on top including strobes, surveillance cameras, solar, etc.

#### Modular Extensions

18" extension to add height and integrate additional tech

#### Integrated Cameras

Install cameras of choice into 4 sidewalls

#### Custom Lettering

Choose your text

#### Material Choices

Aluminum, steel, #304 stainless, or #316 stainless

#### Powder Coating

Custom colors based on RAL color system

#### Branding Program

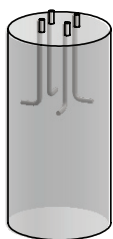
Full color vinyl advertising and graphics

#### Foundation Options

Four simple ways to secure your PRO Stations™ to the ground. When installed correctly, each provide protection from sustained Cat 4 135 mph hurricane force winds.

## FAST Foundations™

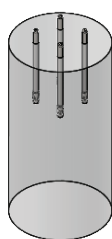
A.



**Poured Concrete**  
L-bolts

**PART:** L-Bolt-625

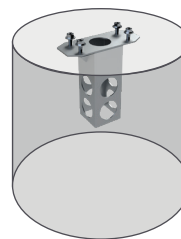
B.



**Existing Concrete**  
Wedge anchors

**PART:** Stud-Anchor-625

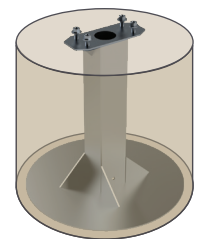
C.



**Poured Concrete**  
Prefabricated anchor

**PART:** 66TOW-EMER-02-304

D.

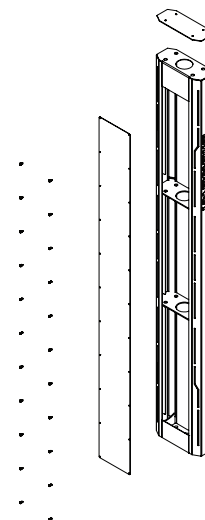
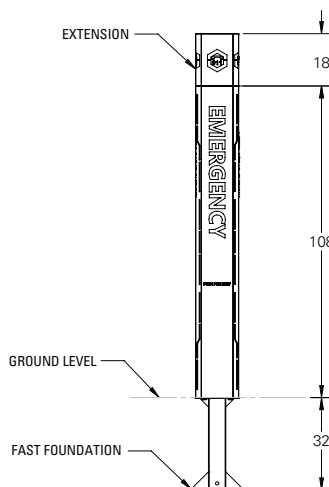
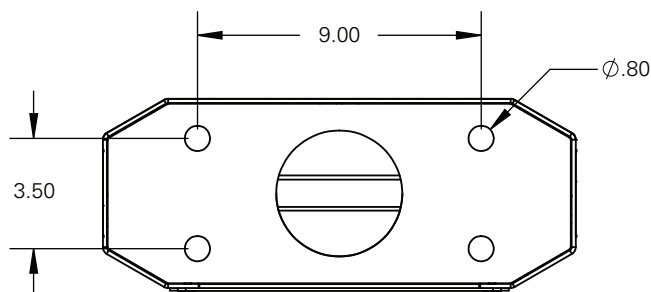


**In-Ground**  
Prefabricated anchor

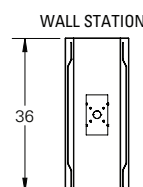
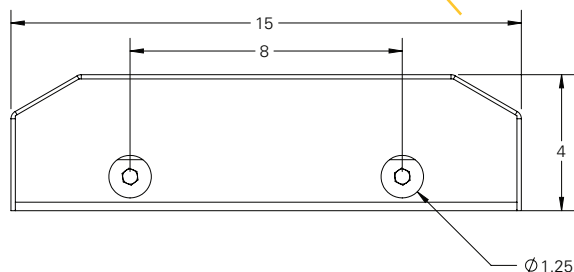
**PART:** 66TOW-EMER-01-304

## Technical Specs

### GROUND TOWER



### WALL STATION



These are the ordering SKU numbers for standard aluminum towers/wall mounts. Please speak with our design team to discover custom options including special dimensions, integrated security cameras, steel or stainless steel fabrication, top mounted technologies, colors, branding, and more.

## Part Numbers

Wall Stations	Hgt	Wdth	Dpth	Wgt	Material	Description	Intercom Cutout Included	Application
156STA-EMER-01-ALU	36"	15"	6"	19 lbs	Alum	Wall Station - Generic	None (cutouts can be added)	Wall mount
156STA-AXIS-01-ALU	36"	15"	6"	19 lbs	Alum	Wall Station - Fits Axis	(1) 2N IP Safety*	Wall mount
156STA-ZENI-01-ALU	36"	15"	6"	19 lbs	Alum	Wall Station - Fits Zenitel	(1) TCIS 2**	Wall mount
156STA-AIPH-01-ALU	36"	15"	6"	19 lbs	Alum	Wall Station - Fits Aiphone	(1) IX-DVF	Wall mount
156STA-COME-01-ALU	36"	15"	6"	19 lbs	Alum	Wall Station - Fits Comelit	(1) 3460EA (Flush)	Wall mount
156STA-VIKI-01-ALU	36"	15"	6"	19 lbs	Alum	Wall Station - Fits Viking	(1) E-1600A-TP-EWP	Wall mount
Ground Towers	Hgt	Wdth	Dpth	Wgt	Material	Description	Intercom Cutout Included	Camera Cutout Included
156TOW-EMER-01-ALU	104"	15"	6"	62 lbs	Alum	Tower - Generic	None (cutouts can be added)	None (cutouts can be added)
156TOW-AXIS-01-ALU	104"	15"	6"	62 lbs	Alum	Tower - Fits Axis	(1) 2N IP Safety*	None (suggested qty 4 Axis F34)
156TOW-ZENI-01-ALU	104"	15"	6"	62 lbs	Alum	Tower - Fits Zenitel	(1) TCIS 2**	None (cutouts can be added)
156TOW-AIPH-01-ALU	104"	15"	6"	62 lbs	Alum	Tower - Fits Aiphone	(1) IX-DVF	None (cutouts can be added)
156TOW-COME-01-ALU	104"	15"	6"	62 lbs	Alum	Tower - Fits Comelit	(1) 3460EA (Flush)	None (cutouts can be added)
156TOW-VIKI-01-ALU	104"	15"	6"	62 lbs	Alum	Tower - Fits Viking	(1) E-1600A-TP-EWP	None (cutouts can be added)
Extensions	Hgt	Wdth	Dpth	Wgt	Material	Description	Intercom Cutout Included	Camera Cutout Included
156TOW-EMER-02-ALU	18"	15"	6"	16 lbs	Alum	Extension	--	None (cutouts can be added)
156TOW-EMER-01-304	27"	15"	12"	12 lbs	304 SS	J-Hook	--	1.5" MNPT
FAST Foundations	Hgt	Wdth	Dpth	Wgt	Material	Description	Conduit Attachments	Pour/Application
66TOW-EMER-01-304	32"	32"	32"	108 lbs	304 SS	Prefabricated anchor	(2) 1/2-13 Tapped Holes	In-ground, gravel/dirt fill
66TOW-EMER-02-304	16"	15"	6"	22 lbs	304 SS	Prefabricated anchor	--	Wet concrete
L-Bolt-625	10"	--	--	12 lbs	Galvanized	L-Bolt Kit (.625" diam)	--	Wet concrete
Stud-Anchor-625	7"	--	--	12 lbs	Galvanized	Stud-Anchor Kit (.625" diam)	--	Existing concrete, retrofit

\*2N IP Safety requires plaster board mount P/N 9151002 \*\*TCIS 2 or equivalent requires flush mount box P/N 107216008140

Axis Communications/2N, Zenitel, Aiphone, Comelit, and Viking are registered trademarks of their respective companies. Pedestal PRO does not represent these brands. Use of them does not imply any affiliation with or endorsement by them. Refer to their websites for more detailed information. Any device shown is not included in a purchase from Pedestal PRO. Product features and dimensions are subject to change at any time. Check pedestalpro.com for current information.

## Options and Benefits

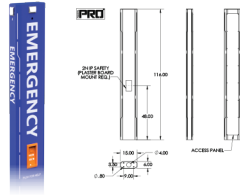
### TECH INTEGRATION

Integrate public address system, solar power, blue strobe, J-Hook, WiFi, PTZ cameras, and more. Our engineers are ready to incorporate your tech.



### FREE CUSTOM CAD

CAD engineers are free to use and on-call to create drawings specific to your project requirements. CAD designs are created within 24 hours.



### BRANDING PROGRAM

Brand your project with school colors, team logos, or a corporate identity that's unique to you. We work with your creative team to provide the exact look and feel you're hoping for.

*Additional cost and lead time may apply.*



### FAST TRACK FABRICATION

12 – 15 days	Standard, no additional charge
10 – 11 days	15% fee
8 – 9 days	25% fee
6 – 7 days	45% fee
4 – 5 days	65% fee
2 – 3 days	100% fee

*Business days exclude weekends and holidays, does not include shipping costs or timelines.*

## Product Categories



EV Charging Stands



Emergency Call Towers



Custom Camera Mounts



Bollards



Cabinets



Goosenecks



Housings



Hoods



Accessories