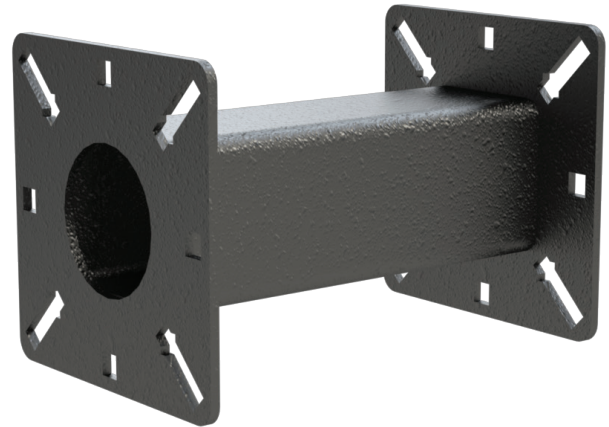


PRODUCT FEATURES

- 6" neck extension for gooseneck pedestals
- Matches pedestals with 2" square tube and 4" square face plates
- Universal design
- Heavy duty materials
- Steel construction
- Black wrinkle powder coating w/ UV protection
- NDAA, Buy American, or USMCA/CUSMA compliant
- Build To Order (BTO)
- Available direct or through distribution

CUSTOM OPTIONS

- Shorten or extend neck reach
 - Customize face plates
 - Readily available powder coating colors (white, yellow, bronze, gray, silver)
- Choose any RAL powder color



DESCRIPTION

Extend the neck of a gooseneck pedestal six (6) additional inches to make using access control devices more convenient for vehicle operators.

RECOMMENDED ACCESSORIES

PEDESTAL



PEDESTAL



PEDESTAL



HOOD



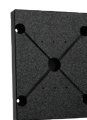
Hood-CS-04.5x6

HOUSING



MC-CS-8-E

BUFFER PLATE



57PLA-PRO-001-HDP

SHIM KIT

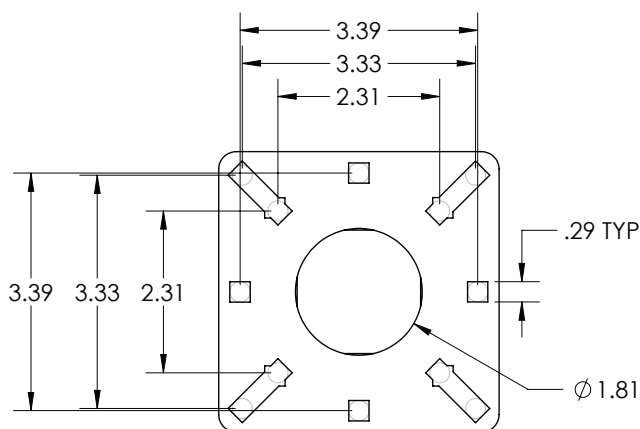


Shim-Kit-001

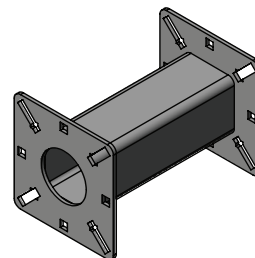
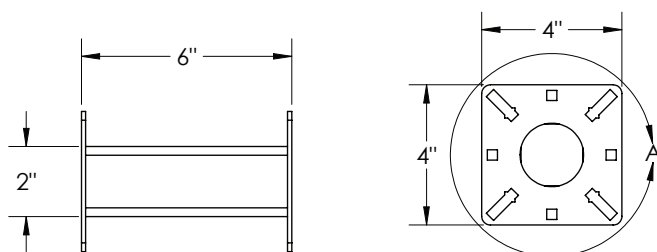
DIRECTIONAL HEAD



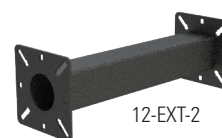
OMNI-4W5T-BLK



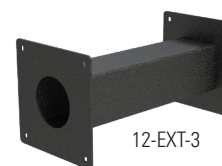
DETAIL A

**DATA & SPECS**

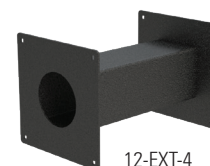
Product Style	Accessory
Material	Steel
Tube	2" x 2" x .120" wall, steel
Face Plate	.125" (11 gauge)
Base Plate	n/a
Cover Plate	n/a
Mounting Method	n/a
Pretreatment	High pressure/high temperature phosphate wash and rinse
Finish	Black wrinkle powder coating (TGIC outdoor polyester)
UV Protection	Yes
Hardware	1/4-20 carriage bolts and nuts (qty 4 each, zinc plated)
Packaging	Foam wrapped and boxed individually
Package Size	13 x 6 x 6
Weight	4 lbs
Shipping Method	UPS, FedEx, or LTL freight
Compliance	NDAA, Buy American, or USMCA/CUSMA (see website for details)
Warranty	1 year limited (see website for details)
Inventory Status	Build To Order (Fast Track production is available)

SIMILAR PRODUCTS

12-EXT-2



12-EXT-3



12-EXT-4