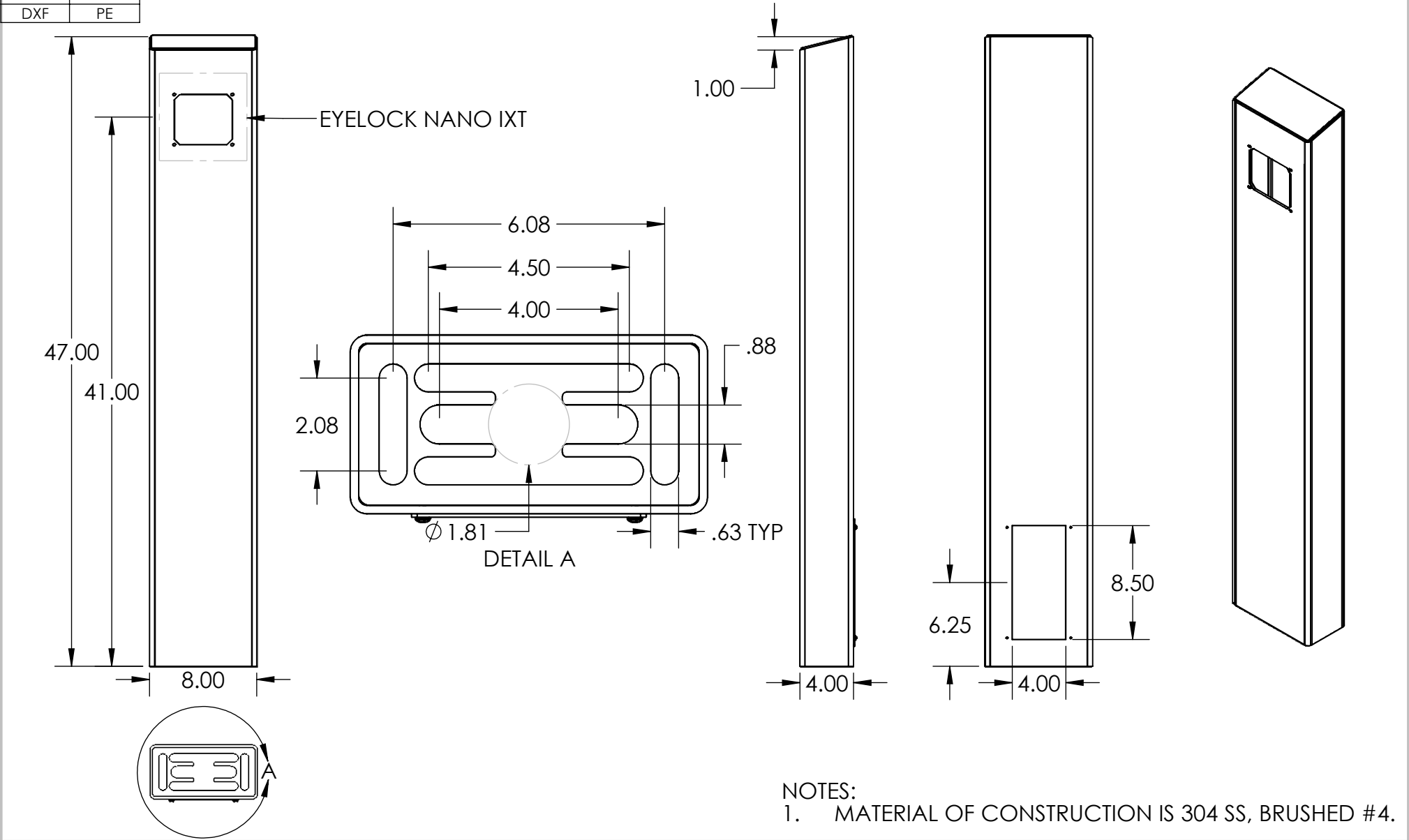


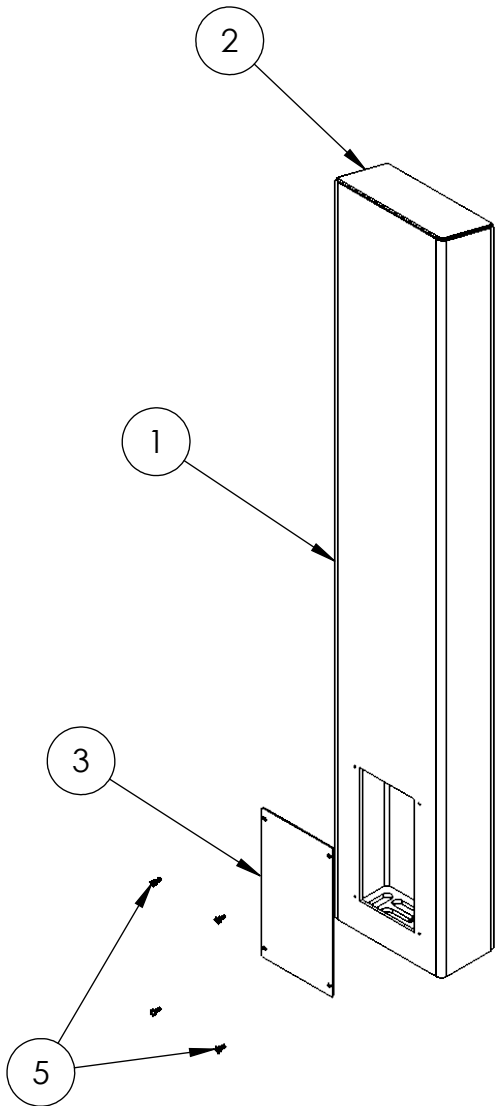
BD	PE
DXF	PE
DIM	PE
DXF	PE



NOTES:
1. MATERIAL OF CONSTRUCTION IS 304 SS, BRUSHED #4.

<div>www.GooseneckStands.com</div> <div>(888) 378 - 1045</div> <div>Sales@GooseneckStands.com</div>	UNLESS OTHERWISE SPECIFIED:		NAME	DATE	TITLE: <div>INSTALLATION</div>					
	DIMENSIONS ARE IN INCHES TOLERANCES: FRACTIONAL ± 1/32 ANGULAR: ±2° TWO PLACE DECIMAL ±0.010 THREE PLACE DECIMAL ±0.005		DRAWN	PE						
			CHECKED							
			INTERPRET GEOMETRIC TOLERANCING PER: ASME Y14.5 -2009		PROPRIETARY AND CONFIDENTIAL		WEDNESDAY, JUNE 18, 2025 2:24:21 PM			SIZE <div>A</div>
	THE INFORMATION CONTAINED IN THIS DRAWING IS THE SOLE PROPERTY OF PEDESTALPRO LLC. ANY REPRODUCTION IN PART OR AS A WHOLE WITHOUT THE WRITTEN PERMISSION OF PEDESTALPRO LLC IS PROHIBITED.									
		WEIGHT: 57.954			NO SCALE		SHEET 1 OF 7			

ITEM NO.	PART NUMBER	DESCRIPTION	QTY.
1	84TOW-EYEL-01-304	TOWER WELDMENT	1
2	PLTCAP-84-84-30	CAP	1
3	PLTACC-510	ACCESS PANEL	1
4	PLTBAS-84-84	BASE PLATE	1
5	--	8-32 X 1/2" SS BUTTON HEAD SCREW	4



NOTES:

- SEE STANDARD PREPARATION AND COATING INSTRUCTIONS FOR COATING PROCEDURE AND COLOR.
- SEE STANDARD PACKAGING INSTRUCTIONS FOR PACKAGING PROCEDURE.

<div>www.GooseneckStands.com</div> <div>(888) 378 - 1045</div> <div>Sales@GooseneckStands.com</div>	UNLESS OTHERWISE SPECIFIED:		NAME	DATE	TITLE:						
	DIMENSIONS ARE IN INCHES TOLERANCES: FRACTIONAL ± 1/32 ANGULAR: ± 2° TWO PLACE DECIMAL ±0.010 THREE PLACE DECIMAL ±0.005	DRAWN			ASSEMBLY						
		CHECKED									
		PROPRIETARY AND CONFIDENTIAL				WEDNESDAY, JUNE 18,					
	THE INFORMATION CONTAINED IN THIS DRAWING IS THE SOLE PROPERTY OF PEDESTALPRO LLC. ANY REPRODUCTION IN PART OR AS A WHOLE WITHOUT THE WRITTEN PERMISSION OF PEDESTALPRO LLC IS PROHIBITED.				2025 2:24:21 PM		SIZE	PART NO.	REV		
INTERPRET GEOMETRIC TOLERANCING PER: ASME Y14.5 -2009						A	84TOW-EYEL-01-304	A			
						WEIGHT: 57.954		NO SCALE		SHEET 2 OF 7	