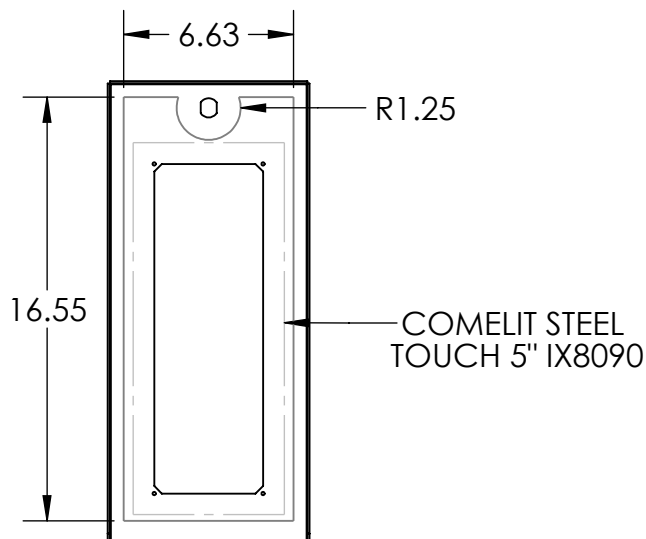
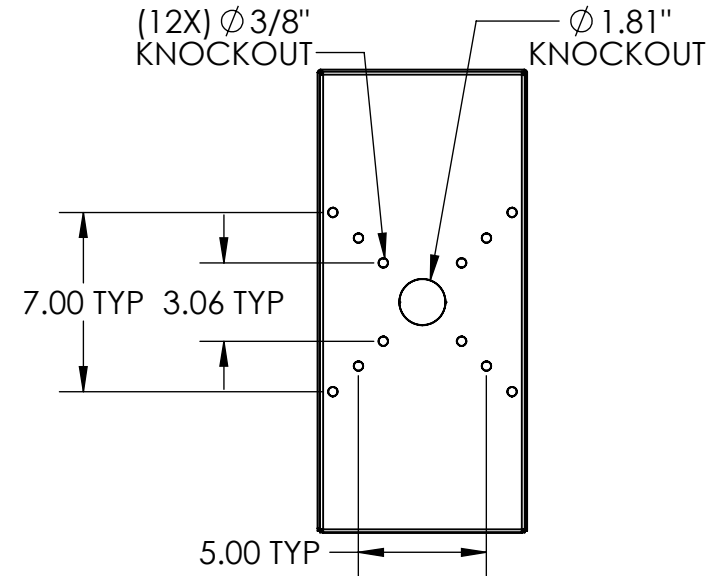
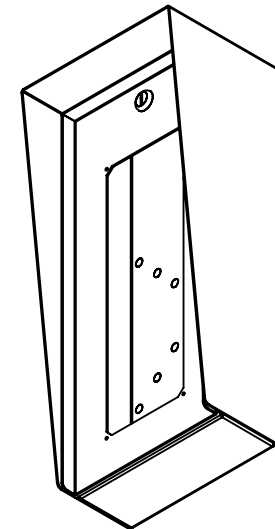


SECTION A-A



AVAILABLE CUTOUT AREA



NOTES:

1. MATERIAL OF CONSTRUCTION IS 304 SS, BRUSHED #4.

www.GooseneckStands.com

(888) 378 - 1045

Sales@GooseneckStands.com

UNLESS OTHERWISE SPECIFIED: ★

DIMENSIONS ARE IN INCHES  
TOLERANCES:  
FRACTIONAL  $\pm 1/32$   
ANGULAR:  $\pm 2^\circ$   
TWO PLACE DECIMAL  $\pm 0.010$   
THREE PLACE DECIMAL  $\pm 0.005$

INTERPRET GEOMETRIC  
TOLERANCING PER:  
ASME Y14.5 -2009

DRAWN  
CHECKED

NAME DATE

PE

PROPRIETARY AND CONFIDENTIAL

THE INFORMATION CONTAINED IN THIS  
DRAWING IS THE SOLE PROPERTY OF  
PEDESTALPRO LLC. ANY REPRODUCTION  
IN PART OR AS A WHOLE WITHOUT THE  
WRITTEN PERMISSION OF PEDESTALPRO LLC  
IS PROHIBITED.

TITLE:

INSTALLATION

Thursday, June 19, 2025  
2:28:59 PM

WEIGHT: 15.083

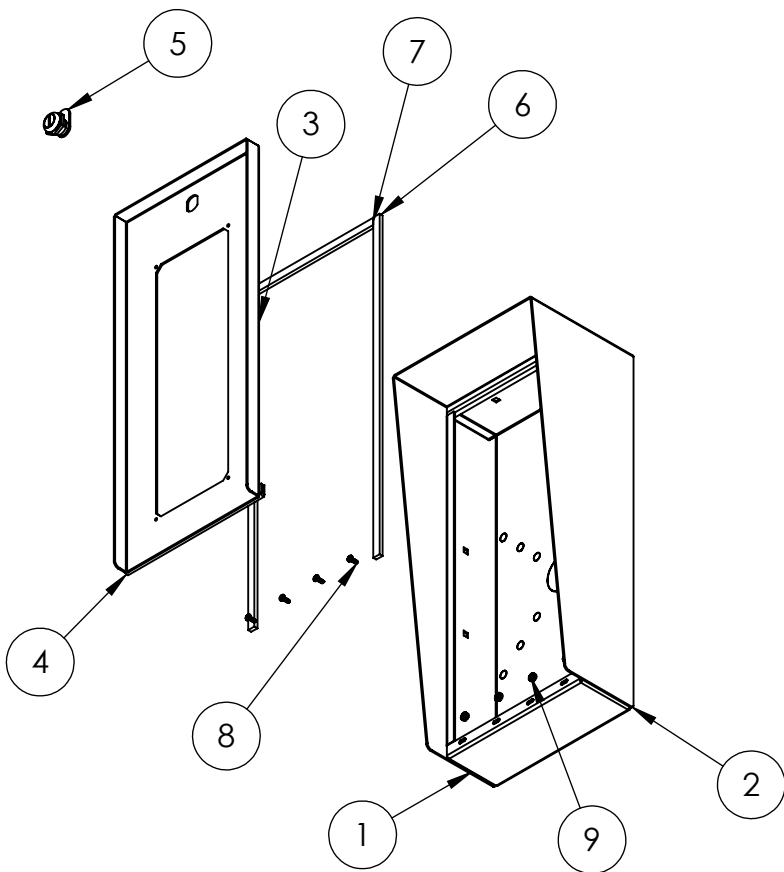
SIZE  
**A**

PART NO.  
818HOU-COME-01-304

REV  
**A**

NO SCALE

SHEET 1 OF 6



ITEM NO.	PART NUMBER	DESCRIPTION	QTY.
1	818HOU-COME-01-304 ENCLOSURE	ENCLOSURE WELDMENT	1
2	818HOU-COME-01-304 HOOD	HOOD	1
3	818HOU-COME-01-304 DOOR	DOOR WELDMENT	1
4	HINGE	PIANO HINGE	1
5	CAM LOCK	STRAIGHT CAM	1
6	GASKET SIDE	3/8" X .150 WEATHERSTRIPPING	2
7	GASKET TOP	3/8" X .150 WEATHERSTRIPPING	1
8	--	6-32 PAN HEAD SCREW	4
9	--	6-32 EXTERNAL TOOTH LOCK NUT	4

#### NOTES:

- SEE STANDARD PREPARATION AND COATING INSTRUCTIONS FOR COATING PROCEDURE AND COLOR.
- SEE STANDARD PACKAGING INSTRUCTIONS FOR PACKAGING PROCEDURE.

<div>www.GooseneckStands.com</div> <div>(888) 378 - 1045</div> <div>Sales@GooseneckStands.com</div>	UNLESS OTHERWISE SPECIFIED:		NAME	DATE	TITLE:					
	DIMENSIONS ARE IN INCHES TOLERANCES: FRACTIONAL ± 1/32 ANGULAR: ± 2° TWO PLACE DECIMAL ±0.010 THREE PLACE DECIMAL ±0.005	DRAWN			ASSEMBLY					
		CHECKED								
		PROPRIETARY AND CONFIDENTIAL								
	INTERPRET GEOMETRIC TOLERANCING PER: ASME Y14.5 -2009	THE INFORMATION CONTAINED IN THIS DRAWING IS THE SOLE PROPERTY OF PEDESTALPRO LLC. ANY REPRODUCTION IN PART OR AS A WHOLE WITHOUT THE WRITTEN PERMISSION OF PEDESTALPRO LLC IS PROHIBITED.				Thursday, June 19, 2025 2:28:59 PM		SIZE A	PART NO. 818HOU-COME-01-304	REV A
				WEIGHT: 15.083		NO SCALE		SHEET 2 OF 6		