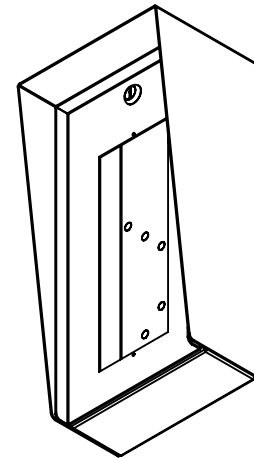


AVAILABLE CUTOUT AREA

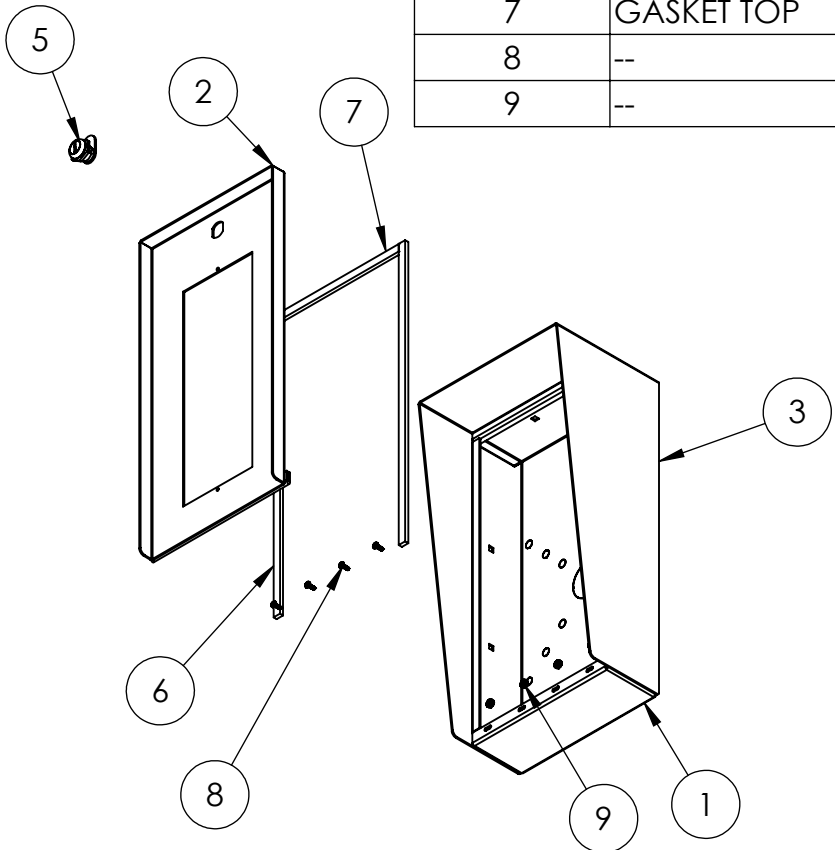


- NOTES:
1. MATERIAL OF CONSTRUCTION IS MILD STEEL.
  2. 2-4 MILS BLACK WRINKLE POWDER COAT.

1. PWDR-BLACK-WRINKLE

|  |   |       |      |          |  |   |          |
|--|---|-------|------|----------|--|---|----------|
| <a href="http://www.GooseneckStands.com">www.GooseneckStands.com</a><br>(888) 378 - 1045<br><a href="mailto:Sales@GooseneckStands.com">Sales@GooseneckStands.com</a>   | UNLESS OTHERWISE SPECIFIED: ★   | NAME  | DATE | TITLE:   |  |   |          |
|  | DIMENSIONS ARE IN INCHES<br>TOLERANCES:<br>FRACTIONAL ± 1/32<br>ANGULAR: ± 2°<br>TWO PLACE DECIMAL ± 0.010<br>THREE PLACE DECIMAL ± 0.005 | DRAWN |      |          | <b>INSTALLATION</b><br><br>Monday, January 27, 2025<br>1:44:31 PM<br>WEIGHT: 13.48 | SIZE                                      | PART NO. |
| INTERPRET GEOMETRIC<br>TOLERANCING PER:<br>ASME Y14.5 -2009  | CHECKED   |       |      | <b>A</b> |  | 816HOU-COM-02-CRS<br>(UT9163)<br>NO SCALE | <b>C</b> |
| PROPRIETARY AND CONFIDENTIAL<br>THE INFORMATION CONTAINED IN THIS DRAWING IS THE SOLE PROPERTY OF PEDESTALPRO LLC. ANY REPRODUCTION IN PART OR AS A WHOLE WITHOUT THE WRITTEN PERMISSION OF PEDESTALPRO LLC IS PROHIBITED. |   |       |      |          |  |   |          |

| ITEM NO. | PART NUMBER                          | DESCRIPTION                  | QTY. |
|----------|--------------------------------------|------------------------------|------|
| 1        | 816HOU-COM-02-CRS ENCLOSURE (UT9163) | ENCLOSURE WELDMENT           | 1    |
| 2        | 816HOU-COM-02-CRS DOOR (UT9163)      | DOOR WELDMENT                | 1    |
| 3        | 816HOU-COM-02-CRS HOOD (UT9163)      | HOOD                         | 1    |
| 4        | HINGE                                | PIANO HINGE                  | 1    |
| 5        | CAM LOCK                             | STRAIGHT CAM                 | 1    |
| 6        | GASKET SIDE                          | 3/8" X .150 WEATHERSTRIPPING | 2    |
| 7        | GASKET TOP                           | 3/8" X .150 WEATHERSTRIPPING | 1    |
| 8        | --                                   | 6-32 PAN HEAD SCREW          | 4    |
| 9        | --                                   | 6-32 EXTERNAL TOOTH LOCK NUT | 4    |



- NOTES:
- SEE STANDARD PREPARATION AND COATING INSTRUCTIONS FOR COATING PROCEDURE AND COLOR.
  - SEE STANDARD PACKAGING INSTRUCTIONS FOR PACKAGING PROCEDURE.

www.GooseneckStands.com  
 (888) 378 - 1045  
 Sales@GooseneckStands.com

UNLESS OTHERWISE SPECIFIED:  
 DIMENSIONS ARE IN INCHES  
 TOLERANCES:  
 FRACTIONAL ± 1/32  
 ANGULAR: ± 2°  
 TWO PLACE DECIMAL ± 0.010  
 THREE PLACE DECIMAL ± 0.005

INTERPRET GEOMETRIC TOLERANCING PER: ASME Y14.5 -2009

DRAWN  
 CHECKED

**PROPRIETARY AND CONFIDENTIAL**  
 THE INFORMATION CONTAINED IN THIS DRAWING IS THE SOLE PROPERTY OF PEDESTALPRO LLC. ANY REPRODUCTION IN PART OR AS A WHOLE WITHOUT THE WRITTEN PERMISSION OF PEDESTALPRO LLC IS PROHIBITED.

TITLE:  
**ASSEMBLY**

Monday, January 27, 2025  
 1:44:31 PM

WEIGHT: 12.913

SIZE **A** PART NO. 816HOU-COM-02-CRS (UT9163) NO SCALE

REV **C** SHEET 2 OF 6