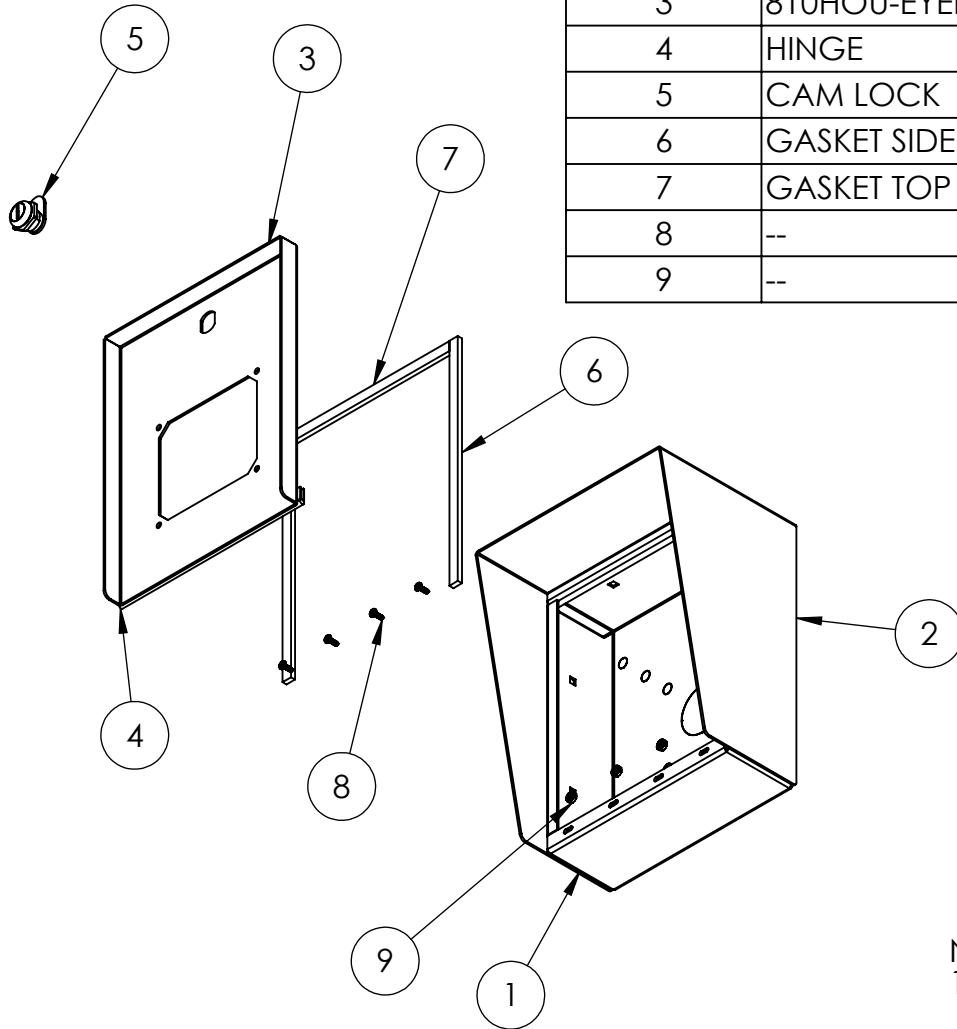


- NOTES:
1. MATERIAL OF CONSTRUCTION IS 304 SS, BRUSHED #4.

<div>www.GooseneckStands.com</div> <div>(888) 378 - 1045</div> <div>Sales@GooseneckStands.com</div>	UNLESS OTHERWISE SPECIFIED: ★		NAME	DATE	TITLE: <div>INSTALLATION</div>				
	DIMENSIONS ARE IN INCHES		DRAWN	PE					
	TOLERANCES:		CHECKED						
	FRACTIONAL: ±1/32		PROPRIETARY AND CONFIDENTIAL THE INFORMATION CONTAINED IN THIS DRAWING IS THE SOLE PROPERTY OF PEDESTALPRO LLC. ANY REPRODUCTION IN PART OR AS A WHOLE WITHOUT THE WRITTEN PERMISSION OF PEDESTALPRO LLC IS PROHIBITED.			Wednesday, June 18, 2025	SIZE	PART NO.	REV
	ANGULAR: ±2°					A	810HOU-EYEL-01-304	A	
TWO PLACE DECIMAL ±0.010					12:50:19 PM				
THREE PLACE DECIMAL ±0.005					WEIGHT: 9.865	NO SCALE		SHEET 1 OF 6	
INTERPRET GEOMETRIC TOLERANCING PER: ASME Y14.5 -2009									

ITEM NO.	PART NUMBER	DESCRIPTION	QTY.
1	810HOU-EYEL-01-304 ENCLOSURE	ENCLOSURE WELDMENT	1
2	810HOU-EYEL-01-304 HOOD	HOOD	1
3	810HOU-EYEL-01-304 DOOR	DOOR WELDMENT	1
4	HINGE	PIANO HINGE	1
5	CAM LOCK	STRAIGHT CAM	1
6	GASKET SIDE	3/8" X .150 WEATHERSTRIPPING	2
7	GASKET TOP	3/8" X .150 WEATHERSTRIPPING	1
8	--	6-32 PAN HEAD SCREW	4
9	--	6-32 EXTERNAL TOOTH LOCK NUT	4



NOTES:

- SEE STANDARD PREPARATION AND COATING INSTRUCTIONS FOR COATING PROCEDURE AND COLOR.
- SEE STANDARD PACKAGING INSTRUCTIONS FOR PACKAGING PROCEDURE.

<div>www.GooseneckStands.com</div> <div>(888) 378 - 1045</div> <div>Sales@GooseneckStands.com</div>	UNLESS OTHERWISE SPECIFIED:			NAME	DATE	TITLE:				
	DIMENSIONS ARE IN INCHES TOLERANCES: FRACTIONAL ± 1/32 ANGULAR: ± 2° TWO PLACE DECIMAL ±0.010 THREE PLACE DECIMAL ±0.005		DRAWN			ASSEMBLY				
			CHECKED							
			PROPRIETARY AND CONFIDENTIAL							
	INTERPRET GEOMETRIC TOLERANCING PER: ASME Y14.5 -2009		THE INFORMATION CONTAINED IN THIS DRAWING IS THE SOLE PROPERTY OF PEDESTALPRO LLC. ANY REPRODUCTION IN PART OR AS A WHOLE WITHOUT THE WRITTEN PERMISSION OF PEDESTALPRO LLC IS PROHIBITED.			Wednesday, June 18, 2025 12:50:19 PM		SIZE A	PART NO. 810HOU-EYEL-01-304	REV A
			WEIGHT: 9.865		NO SCALE		SHEET 2 OF 6			