

- NOTES:
1. MATERIAL OF CONSTRUCTION IS 304 SS, BRUSHED #4.

www.GooseneckStands.com

(888) 378 - 1045

Sales@GooseneckStands.com

UNLESS OTHERWISE SPECIFIED: ★

DIMENSIONS ARE IN INCHES
TOLERANCES:
FRACTIONAL $\pm 1/32$
ANGULAR: $\pm 2^\circ$
TWO PLACE DECIMAL ± 0.010
THREE PLACE DECIMAL ± 0.005

INTERPRET GEOMETRIC
TOLERANCING PER:
ASME Y14.5 -2009

DRAWN

CHECKED

PROPRIETARY AND CONFIDENTIAL

THE INFORMATION CONTAINED IN THIS
DRAWING IS THE SOLE PROPERTY OF
PEDESTALPRO LLC. ANY REPRODUCTION
IN PART OR AS A WHOLE WITHOUT THE
WRITTEN PERMISSION OF PEDESTALPRO LLC
IS PROHIBITED.

NAME

DATE

TITLE:

INSTALLATION

Tuesday, June 24, 2025
12:26:13 PM

WEIGHT: 10.002

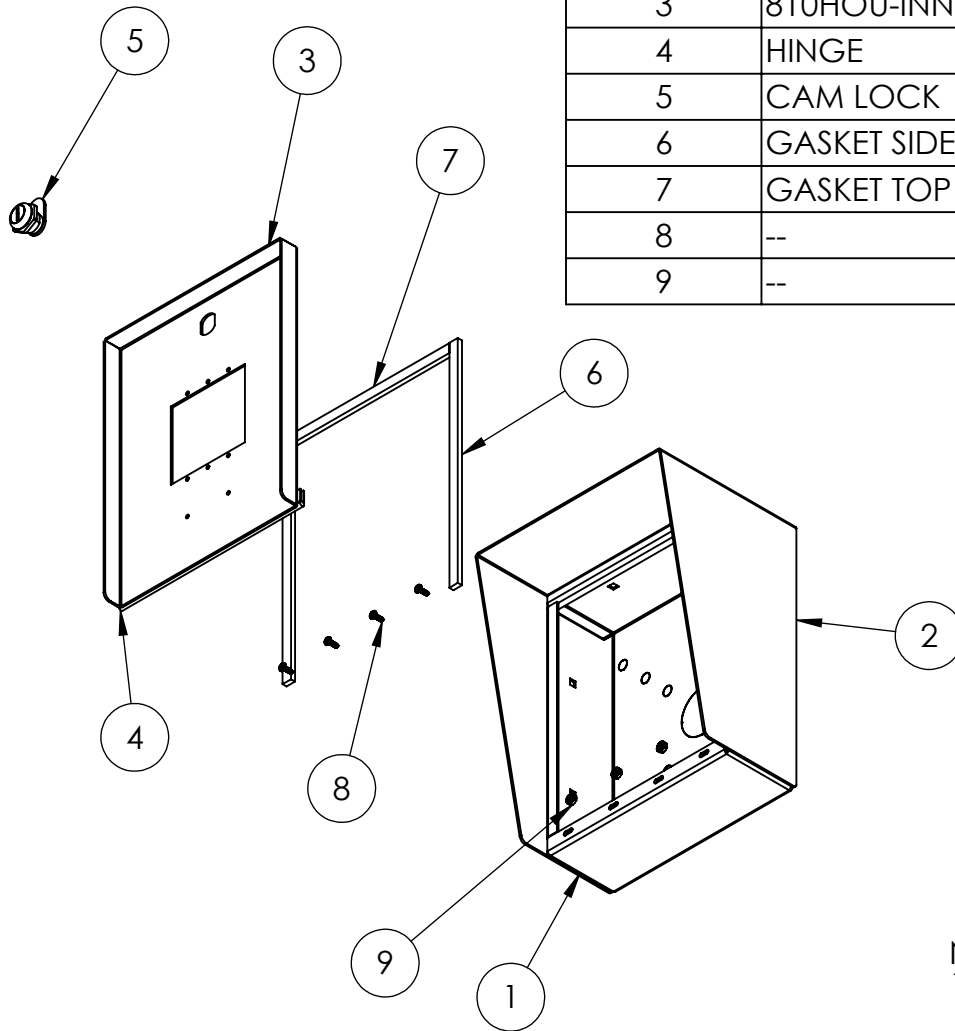
SIZE
A

PART NO.
810HOU-INNO-01-304

REV
A

NO SCALE

SHEET 1 OF 6



ITEM NO.	PART NUMBER	DESCRIPTION	QTY.
1	810HOU-INNO-01-304 ENCLOSURE	ENCLOSURE WELDMENT	1
2	810HOU-INNO-01-304 HOOD	HOOD	1
3	810HOU-INNO-01-304 DOOR	DOOR WELDMENT	1
4	HINGE	PIANO HINGE	1
5	CAM LOCK	STRAIGHT CAM	1
6	GASKET SIDE	3/8" X .150 WEATHERSTRIPPING	2
7	GASKET TOP	3/8" X .150 WEATHERSTRIPPING	1
8	--	6-32 PAN HEAD SCREW	4
9	--	6-32 EXTERNAL TOOTH LOCK NUT	4

NOTES:

- SEE STANDARD PREPARATION AND COATING INSTRUCTIONS FOR COATING PROCEDURE AND COLOR.
- SEE STANDARD PACKAGING INSTRUCTIONS FOR PACKAGING PROCEDURE.

<div>www.GooseneckStands.com</div> <div>(888) 378 - 1045</div> <div>Sales@GooseneckStands.com</div>	UNLESS OTHERWISE SPECIFIED:		NAME	DATE	TITLE:				
	DIMENSIONS ARE IN INCHES TOLERANCES: FRACTIONAL ± 1/32 ANGULAR: ± 2° TWO PLACE DECIMAL ± 0.010 THREE PLACE DECIMAL ± 0.005		DRAWN		ASSEMBLY				
			CHECKED						
			INTERPRET GEOMETRIC TOLERANCING PER: ASME Y14.5 -2009		PROPRIETARY AND CONFIDENTIAL		Tuesday, June 24, 2025 12:26:13 PM		SIZE
	THE INFORMATION CONTAINED IN THIS DRAWING IS THE SOLE PROPERTY OF PEDESTALPRO LLC. ANY REPRODUCTION IN PART OR AS A WHOLE WITHOUT THE WRITTEN PERMISSION OF PEDESTALPRO LLC IS PROHIBITED.				A	810HOU-INNO-01-304			A
		WEIGHT: 10.002		NO SCALE		SHEET 2 OF 6			