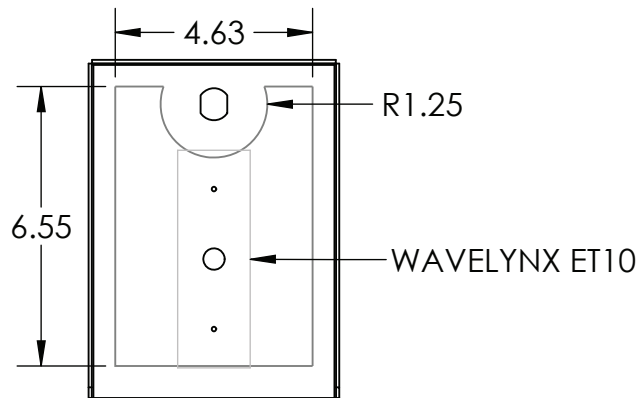
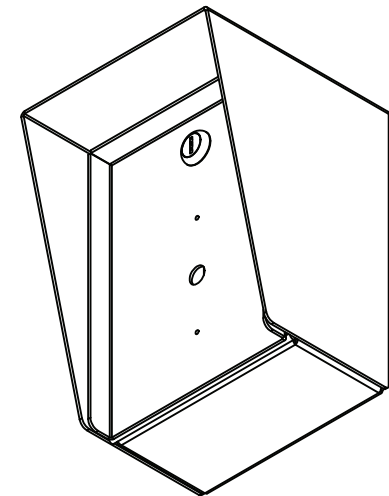
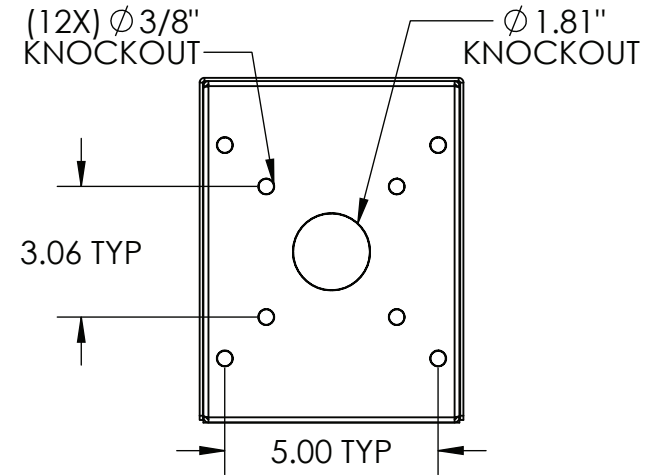


SECTION A-A



AVAILABLE CUTOUT AREA

NOTES:

1. MATERIAL OF CONSTRUCTION IS 304 SS, BRUSHED #4.

UNLESS OTHERWISE SPECIFIED: ★	NAME	DATE
DIMENSIONS ARE IN INCHES	DRAWN	PE
TOLERANCES:	CHECKED	
FRACTIONAL: $\pm 1/32$	PROPRIETARY AND CONFIDENTIAL THE INFORMATION CONTAINED IN THIS DRAWING IS THE SOLE PROPERTY OF PEDESTALPRO LLC. ANY REPRODUCTION IN PART OR AS A WHOLE WITHOUT THE WRITTEN PERMISSION OF PEDESTALPRO LLC IS PROHIBITED.	
ANGULAR: $\pm 2^\circ$		
TWO PLACE DECIMAL ± 0.010		
THREE PLACE DECIMAL ± 0.005		
INTERPRET GEOMETRIC TOLERANCING PER: ASME Y14.5 -2009		

TITLE:

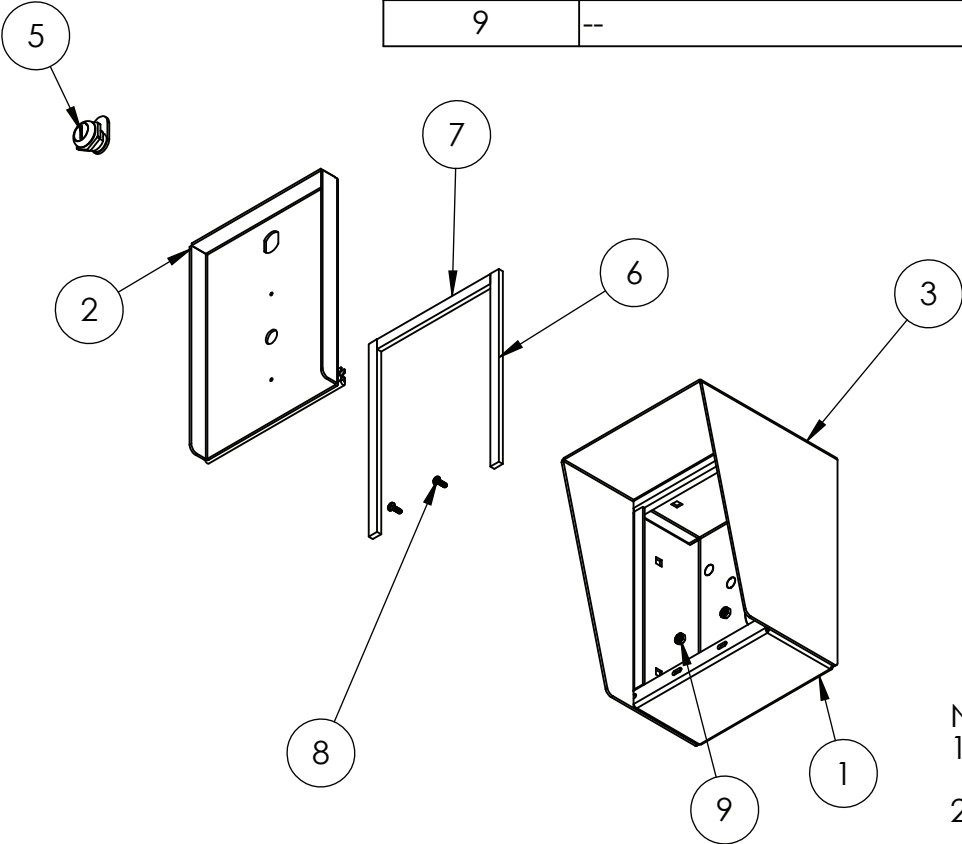
INSTALLATION

Wednesday, November 19, 2025 1:43:05 PM

WEIGHT: 7.324

SIZE	PART NO.	REV
A	68HOU-WALY-01-304	C
NO SCALE		SHEET 1 OF 6

ITEM NO.	PART NUMBER	DESCRIPTION	QTY.
1	68HOU-WALY-01-304 ENCLOSURE	ENCLOSURE WELDMENT	1
2	68HOU-WALY-01-304 DOOR	DOOR WELDMENT	1
3	68HOU-WALY-01-304 HOOD	HOOD	1
4	HINGE	PIANO HINGE	1
5	CAM LOCK	STRAIGHT CAM	1
6	GASKET SIDE	3/8" X .150 WEATHERSTRIPPING	2
7	GASKET TOP	3/8" X .150 WEATHERSTRIPPING	1
8	--	6-32 PAN HEAD SCREW	2
9	--	6-32 EXTERNAL TOOTH LOCK NUT	2



- NOTES:
- SEE STANDARD PREPARATION AND COATING INSTRUCTIONS FOR COATING PROCEDURE AND COLOR.
 - SEE STANDARD PACKAGING INSTRUCTIONS FOR PACKAGING PROCEDURE.

UNLESS OTHERWISE SPECIFIED:		NAME	DATE	TITLE:					
DIMENSIONS ARE IN INCHES TOLERANCES: FRACTIONAL ±1/32 ANGULAR: ±2° TWO PLACE DECIMAL ±0.010 THREE PLACE DECIMAL ±0.005	DRAWN			ASSEMBLY					
	CHECKED								
	PROPRIETARY AND CONFIDENTIAL THE INFORMATION CONTAINED IN THIS DRAWING IS THE SOLE PROPERTY OF PEDESTALPRO LLC. ANY REPRODUCTION IN PART OR AS A WHOLE WITHOUT THE WRITTEN PERMISSION OF PEDESTALPRO LLC IS PROHIBITED.			Wednesday, November 19, 2025 1:43:05 PM		SIZE A	PART NO. 68HOU-WALY-01-304	REV C	
INTERPRET GEOMETRIC TOLERANCING PER: ASME Y14.5 -2009				WEIGHT: 7.324		NO SCALE		SHEET 2 OF 6	