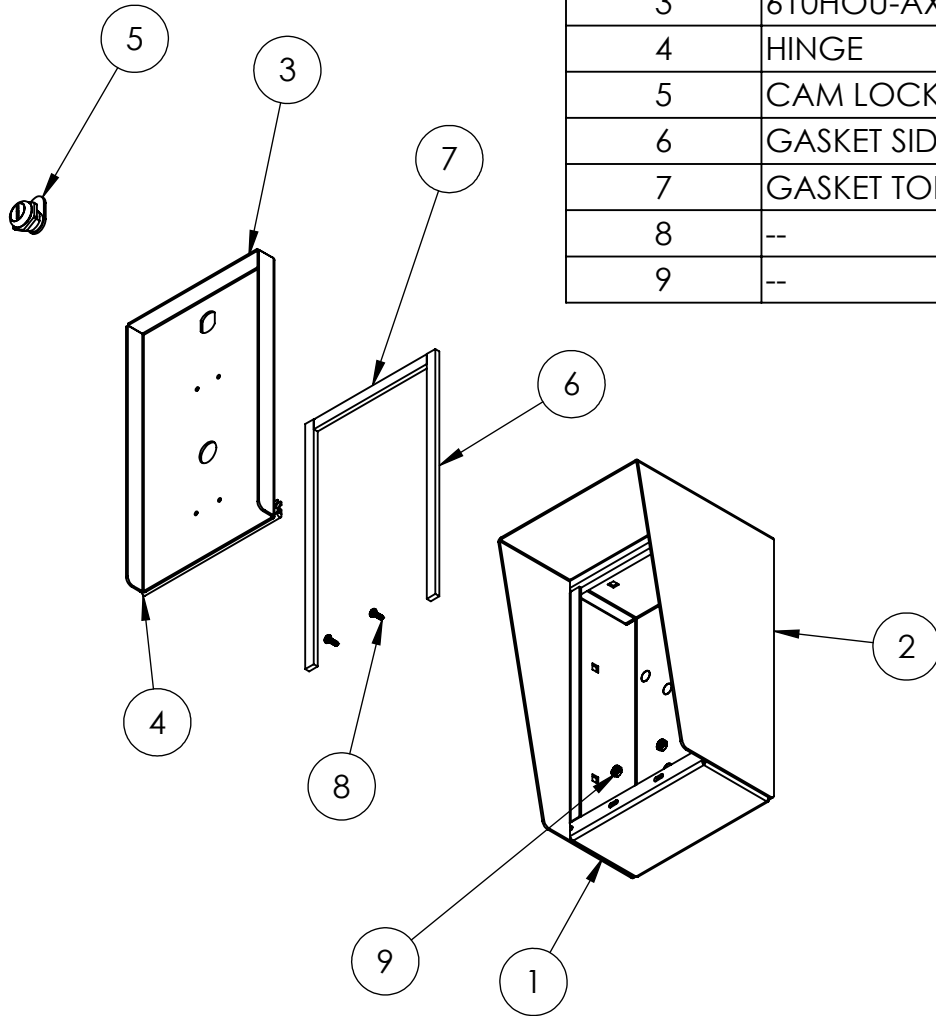


- NOTES:
1. MATERIAL OF CONSTRUCTION IS 304 SS, BRUSHED #4.

<div>www.GooseneckStands.com</div> <div>(888) 378 - 1045</div> <div>Sales@GooseneckStands.com</div>	UNLESS OTHERWISE SPECIFIED: ★		NAME	DATE	TITLE: <div>INSTALLATION</div>					
	DIMENSIONS ARE IN INCHES		DRAWN							
	TOLERANCES:		CHECKED							
	FRACTIONAL ± 1/32		<div>PROPRIETARY AND CONFIDENTIAL</div> <div>THE INFORMATION CONTAINED IN THIS DRAWING IS THE SOLE PROPERTY OF PEDESTALPRO LLC. ANY REPRODUCTION IN PART OR AS A WHOLE WITHOUT THE WRITTEN PERMISSION OF PEDESTALPRO LLC IS PROHIBITED.</div>			Thursday, August 21, 2025		SIZE <div>A</div>	PART NO. <div>610HOU-AXIS-04-304</div>	REV <div>A</div>
	ANGULAR: ±2°					12:46:43 PM				
	TWO PLACE DECIMAL ±0.010					WEIGHT: 8.659		NO SCALE		SHEET 1 OF 6
	THREE PLACE DECIMAL ±0.005									
	INTERPRET GEOMETRIC TOLERANCING PER: ASME Y14.5 -2009									

ITEM NO.	PART NUMBER	DESCRIPTION	QTY.
1	610HOU-AXIS-04-304 ENCLOSURE	ENCLOSURE WELDMENT	1
2	610HOU-AXIS-04-304 HOOD	HOOD	1
3	610HOU-AXIS-04-304 DOOR	DOOR WELDMENT	1
4	HINGE	PIANO HINGE	1
5	CAM LOCK	STRAIGHT CAM	1
6	GASKET SIDE	3/8" X .150 WEATHERSTRIPPING	2
7	GASKET TOP	3/8" X .150 WEATHERSTRIPPING	1
8	--	6-32 PAN HEAD SCREW	2
9	--	6-32 EXTERNAL TOOTH LOCK NUT	2



NOTES:

- SEE STANDARD PREPARATION AND COATING INSTRUCTIONS FOR COATING PROCEDURE AND COLOR.
- SEE STANDARD PACKAGING INSTRUCTIONS FOR PACKAGING PROCEDURE.

<div>www.GooseneckStands.com</div> <div>(888) 378 - 1045</div> <div>Sales@GooseneckStands.com</div>	UNLESS OTHERWISE SPECIFIED:		NAME	DATE	TITLE:				
	DIMENSIONS ARE IN INCHES TOLERANCES: FRACTIONAL ± 1/32 ANGULAR: ± 2° TWO PLACE DECIMAL ±0.010 THREE PLACE DECIMAL ±0.005	DRAWN			ASSEMBLY				
		CHECKED							
		PROPRIETARY AND CONFIDENTIAL							
		THE INFORMATION CONTAINED IN THIS DRAWING IS THE SOLE PROPERTY OF PEDESTALPRO LLC. ANY REPRODUCTION IN PART OR AS A WHOLE WITHOUT THE WRITTEN PERMISSION OF PEDESTALPRO LLC IS PROHIBITED.				Thursday, August 21, 2025 12:46:43 PM		SIZE A	PART NO. 610HOU-AXIS-04-304
INTERPRET GEOMETRIC TOLERANCING PER: ASME Y14.5 -2009					WEIGHT: 8.659		NO SCALE		SHEET 2 OF 6