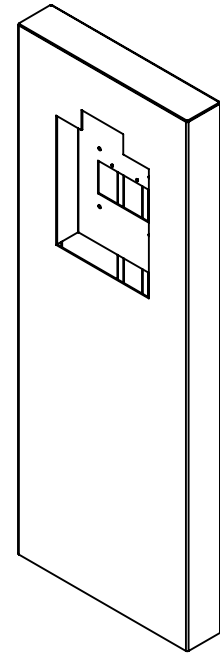
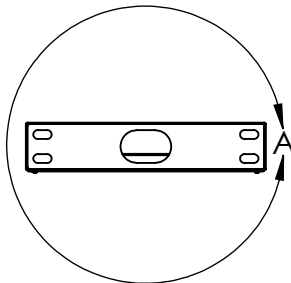
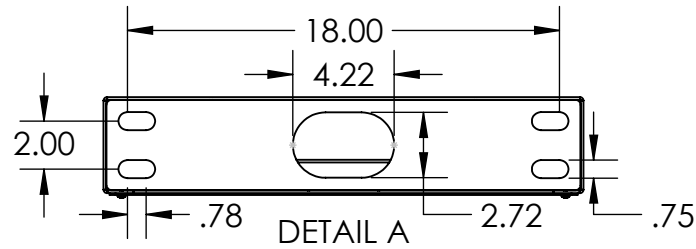


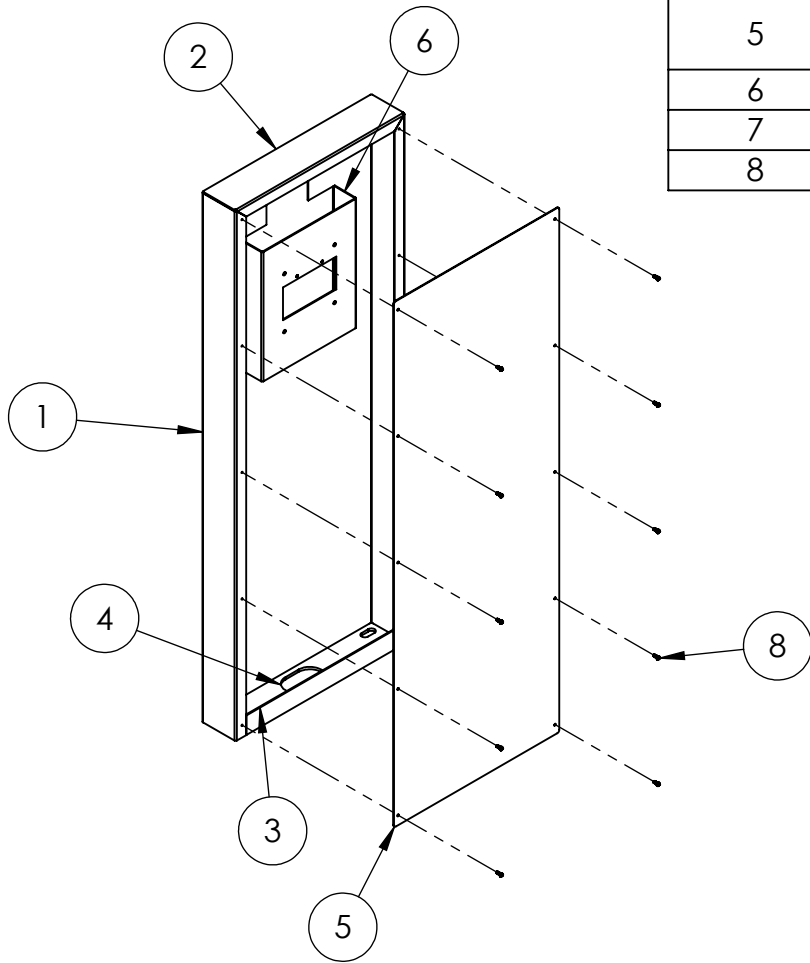
WINMATE R17IT3S-SPA1HB-T2
 PANEL PC FLUSH CUTOUT & BRACKET



- NOTES:
 1. MATERIAL OF CONSTRUCTION IS 304 SS, BRUSHED #4.

www.GooseneckStands.com (888) 378 - 1045 Sales@GooseneckStands.com	UNLESS OTHERWISE SPECIFIED: DIMENSIONS ARE IN INCHES TOLERANCES: FRACTIONAL $\pm 1/32$ ANGULAR: $\pm 2^\circ$ TWO PLACE DECIMAL ± 0.010 THREE PLACE DECIMAL ± 0.005	DRAWN CHECKED	NAME DATE	TITLE: INSTALLATION
	INTERPRET GEOMETRIC TOLERANCING PER: ASME Y14.5 -2009	PROPRIETARY AND CONFIDENTIAL THE INFORMATION CONTAINED IN THIS DRAWING IS THE SOLE PROPERTY OF PEDESTALPRO LLC. ANY REPRODUCTION IN PART OR AS A WHOLE WITHOUT THE WRITTEN PERMISSION OF PEDESTALPRO LLC IS PROHIBITED.	Friday, January 10, 2025 10:46:23 AM WEIGHT: 88.816	SIZE A PART NO. 204CAB-WINM-01-304 NO SCALE

ITEM NO.	PART NUMBER	DESCRIPTION	QTY.
1	204CAB-WINM-01-304 MAIN BODY	MAIN BODY	1
2	204CAB-WINM-01-304 TOP	TOP	1
3	204CAB-WINM-01-304 BOTTOM CLOSURE	BOTTOM CLOSURE	1
4	204CAB-WINM-01-304 BASE PLATE	BASE PLATE	1
5	204CAB-WINM-01-304 ACCESS PANEL	ACCESS PANEL	1
6	PLABRA-WM-R17IT3S-SPA1HB-T2	BRACKET	1
7	STIFFENER	STIFFENER	1
8	--	8-32 X 1/2" PAN HEAD SCREW	10



NOTES:

1. SEE STANDARD PREPARATION AND COATING INSTRUCTIONS FOR COATING PROCEDURE AND COLOR.
2. SEE STANDARD PACKAGING INSTRUCTIONS FOR PACKAGING PROCEDURE.

www.GooseneckStands.com (888) 378 - 1045 Sales@GooseneckStands.com	UNLESS OTHERWISE SPECIFIED:	NAME	DATE	TITLE:		
	DIMENSIONS ARE IN INCHES TOLERANCES: FRACTIONAL $\pm 1/32$ ANGULAR: $\pm 2^\circ$ TWO PLACE DECIMAL ± 0.010 THREE PLACE DECIMAL ± 0.005	DRAWN			ASSEMBLY	
INTERPRET GEOMETRIC TOLERANCING PER: ASME Y14.5 -2009	CHECKED			Friday, January 10, 2025 10:46:23 AM		SIZE A PART NO. 204CAB-WINM-01-304
PROPRIETARY AND CONFIDENTIAL THE INFORMATION CONTAINED IN THIS DRAWING IS THE SOLE PROPERTY OF PEDESTALPRO LLC. ANY REPRODUCTION IN PART OR AS A WHOLE WITHOUT THE WRITTEN PERMISSION OF PEDESTALPRO LLC IS PROHIBITED.				WEIGHT: 88.816	NO SCALE	SHEET 2 OF 10