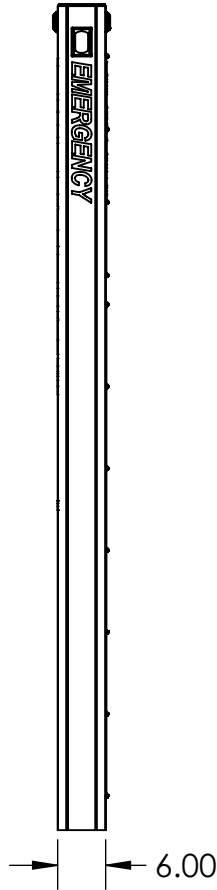
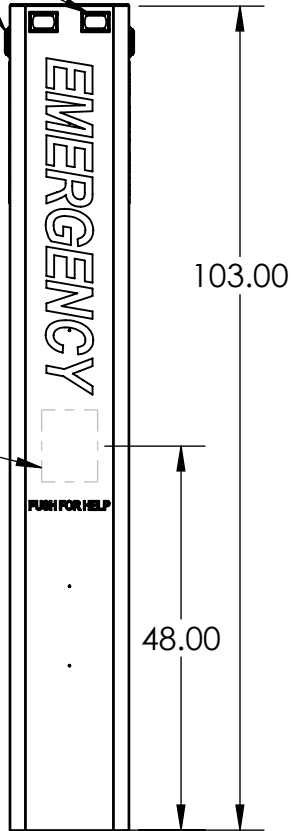
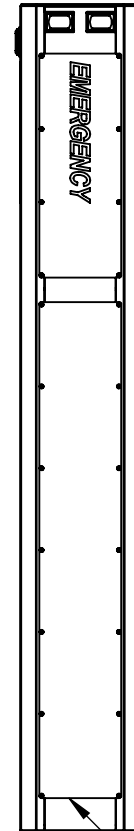


(6X) BLUE STROBE

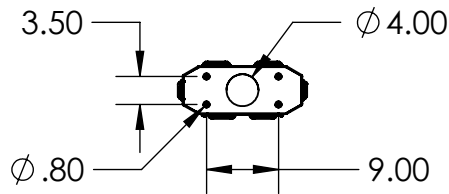
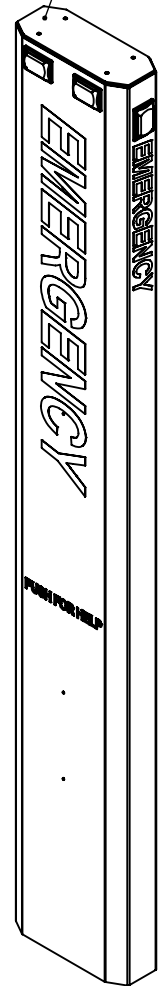
AVAILABLE CUTOUT AREA



REMOVABLE TOP/ACCESSORY MOUNTING



ACCESS PANEL



NOTES:

1. MATERIAL OF CONSTRUCTION IS ALUMINUM.
2. COATED IN 2-4 MILS OF GLOSS BLUE POWDER COATING.
3. INTERCOM, CAMERAS, ETC. TO BE PROVIDED BY CUSTOMER.
4. LIGHTING REQUIRES CONNECTION TO INTERCOM FOR ACTIVATION.

www.GooseneckStands.com

(888) 378 - 1045

Sales@GooseneckStands.com

UNLESS OTHERWISE SPECIFIED:

DIMENSIONS ARE IN INCHES  
TOLERANCES:  
FRACTIONAL  $\pm 1/32$   
ANGULAR:  $\pm 2^\circ$   
TWO PLACE DECIMAL  $\pm 0.010$   
THREE PLACE DECIMAL  $\pm 0.005$

INTERPRET GEOMETRIC TOLERANCING PER: ASME Y14.5 -2009

NAME DATE

DRAWN

CHECKED

**PROPRIETARY AND CONFIDENTIAL**

THE INFORMATION CONTAINED IN THIS DRAWING IS THE SOLE PROPERTY OF PEDESTALPRO LLC. ANY REPRODUCTION IN PART OR AS A WHOLE WITHOUT THE WRITTEN PERMISSION OF PEDESTALPRO LLC IS PROHIBITED.

TITLE:

INSTALLATION

WEDNESDAY,  
FEBRUARY 26, 2025  
8:19:37 AM

WEIGHT: 57.154

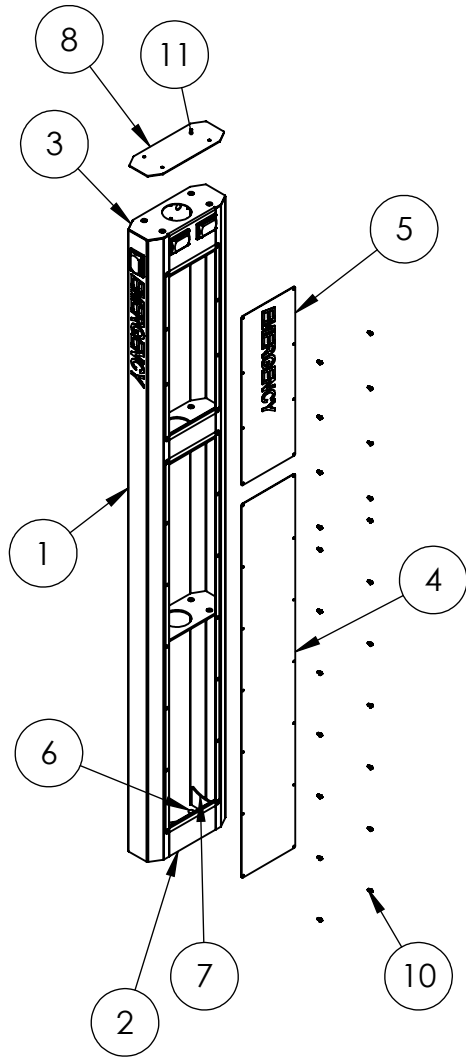
SIZE  
**A**

PART NO.  
156TOW-EMER-03-ALU

REV  
**A**

NO SCALE

SHEET 1 OF 16



ITEM NO.	PART NUMBER	DESCRIPTION	QTY.
1	156TOW-EMER-03-ALU BODY	ALUMINUM BODY	1
2	156TOW-EMER-03-ALU CLOSURE	CLOSURE PANEL	2
3	156TOW-EMER-03-ALU CAP	TOP CAP	1
4	156TOW-EMER-03-ALU ACCESS LOWER	ACCESS PANEL	1
5	156TOW-EMER-03-ALU ACCESS UPPER	ACCESS PANEL	1
6	156TOW-EMER-03-ALU BASE	BASE PLATE	1
7	156TOW-EMER-03-ALU STIFFENER	BASE STIFFENER	2
8	156TOW-EMER-03-ALU TOP CAP	BLANK CAP	1
9	156TOW-EMER-03-ALU RIB	INTERNAL BRACING PLATE	2
10	--	1/4-20 X 1/2 SS PAN HD SCREW	22
11	--	1/4-20 X 1" SS PEM STUD	4
12	--	1/4-20 NYLON LOCK NUT	4
13	--	1/4-20 X 1" FLAT WASHER	4
14	--	4-40 X 1/2" SS PAN HD SCREW	24
15	--	DIN MOUNTING RAIL BOTTOM	1
16	--	DIN MOUNTING RAIL UPPER & MID	2
17	BRICK LIGHT	BLUE STOBE LED LIGHT	6
18	LARGE EMERGENCY DECAL	WHITE REFLECTIVE VINYL	1
19	MEDIUM EMERGENCY DECAL	WHITE REFLECTIVE VINYL	3
20	PUSH FOR HELP DECAL	WHITE REFLECTIVE VINYL	1
21	--	10-24 STAINLESS STEEL KEPS NUT	6
22	--	10-24 X .75" SS PEM STUD	6
23	TOP-BOTTOM GASKET	SOFT NEOPRENE GASKET	4
24	LOWER SIDE GASKET	SOFT NEOPRENE GASKET	2
25	UPPER SIDE GASKET	SOFT NEOPRENE GASKET	2

www.GooseneckStands.com  
 (888) 378 - 1045  
 Sales@GooseneckStands.com

UNLESS OTHERWISE SPECIFIED:  
 DIMENSIONS ARE IN INCHES  
 TOLERANCES:  
 FRACTIONAL ± 1/32  
 ANGULAR: ± 2°  
 TWO PLACE DECIMAL ± 0.010  
 THREE PLACE DECIMAL ± 0.005  
 INTERPRET GEOMETRIC  
 TOLERANCING PER:  
 ASME Y14.5 -2009

NAME DATE  
 DRAWN  
 CHECKED  
**PROPRIETARY AND CONFIDENTIAL**  
 THE INFORMATION CONTAINED IN THIS  
 DRAWING IS THE SOLE PROPERTY OF  
 PEDESTALPRO LLC. ANY REPRODUCTION  
 IN PART OR AS A WHOLE WITHOUT THE  
 WRITTEN PERMISSION OF PEDESTALPRO LLC  
 IS PROHIBITED.

TITLE:  
**ASSEMBLY**  
 WEDNESDAY,  
 FEBRUARY 26, 2025  
 8:19:37 AM  
 WEIGHT: 57.154

SIZE PART NO.  
**A** 156TOW-EMER-03-ALU

REV  
**A**

NO SCALE SHEET 2 OF 16